

Water Activation System



World Inspire Japan Co.,Ltd.(Japan)

Activate the Living Potency of Pristine Natural Living Waters From Tap Water...

Water is the foundation of life, a natural source of power. And precious clean water is a necessity for maintaining a clean and healthy body that sustains life. Yet, the present concerns of pollution and environmental degradation, poses a big challenge in maintaining the purity and potability of water especially in the water systems we depend on for ur daily household use.

Starting from its very source, water is compromised through rusty pipes and faucets, contaminated leaks, the concerns on waste water clogging, sewage pipes and pollutants that flows to our natural water systems to name a few.

But these challenges are now a thing of the past, if we only come to realize that a relatively new technology that revolutionizes the use of water is already within our reach, conveniently bringing it to our very own homes...potable, clean, active, purifying, energizing, hygienic, energy saving and cares to balance the ecosystem....is now here in **Japan**.

A New Innovation in Water Activating System...

W.Inspire's

Water Activator

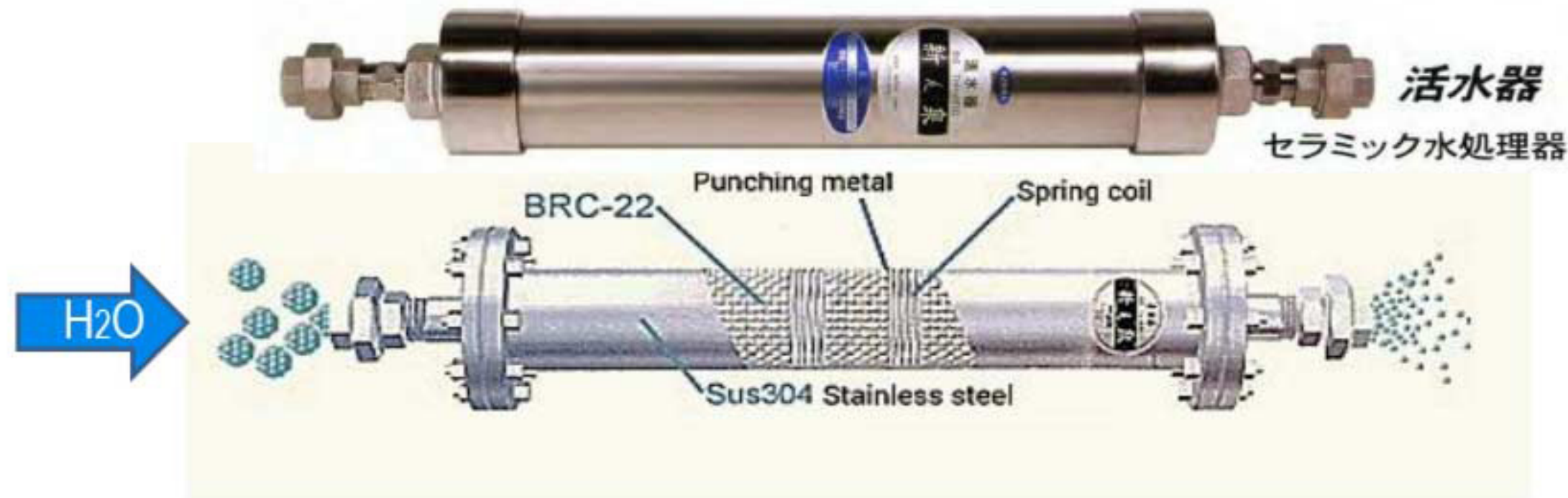


W.Inspire's Water Activator System Is a water improvement system that loosens the hydrogen bonding of water, with its built-in special bio- ceramic balls that transforms tap water to alkaline water, through a process of ionization upgrading the water's active function as to: solvency, detergency, and penetration, thus, reviving the natural living power of water.

This innovative device mitigates the molecules of the liquid and makes a new chemical reaction in order to lower the water tension and make it smooth. **W.Inspire's device does not use any energy or chemicals.** This reduces the risk of pollution, shattered or broken plumbing from high water pressure, and lowers maintenance costs of inspections and repairs. It is an innovative product that has received high evaluation, and can be easily installed in places requiring water resources such as residences, apartments, dorms, hotels, hospitals, factories, ships, buildings, resorts, etc. Our vision is to contribute to the world, a nature friendly environment by providing a clean, safe and convenient way of using water.



Structure and principles of **W.Inspire's** Water Activator



How Does the System Work?

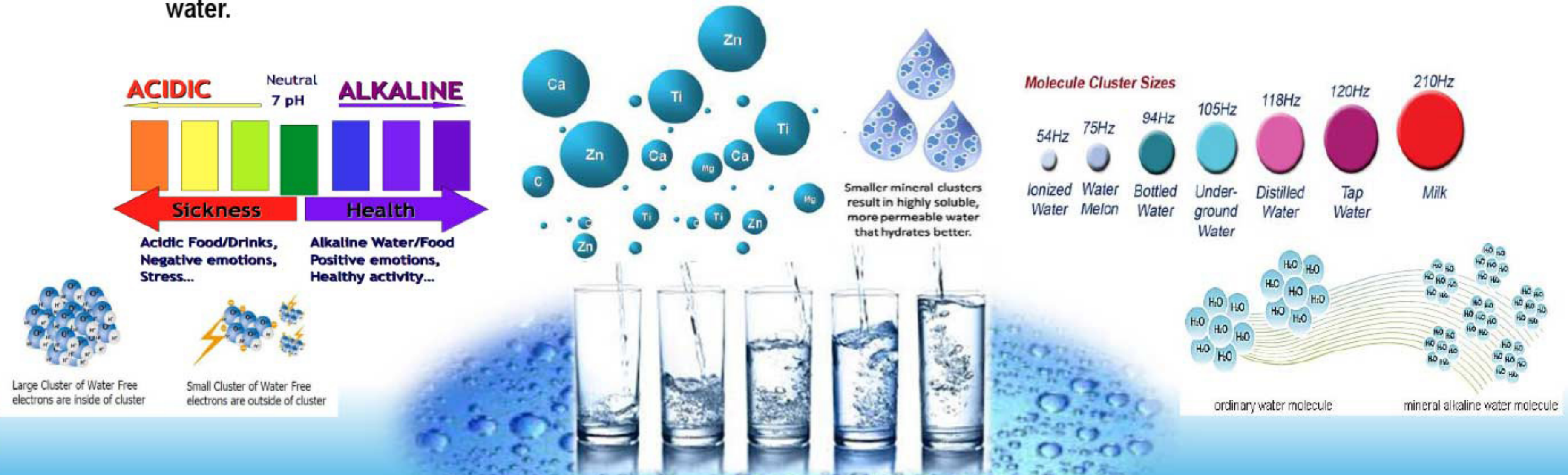
Inside this system is a ceramic water disposal device that relieves hydrogen bonds and make a new chemical reaction to make the water stay smooth and enhance its function. The TH-series cover is made out of stainless multiple cylinder with special fine ceramic(BRC22/catalyst) which is built in multi-layered barrier, rib structure that is fitted to a number of waterways (that doesn't make any leaks) and make diffusion inside the structure easier. Also the R-series, stored a special fine ceramic (BRC22/catalyst) on the disc located inside the stainless steel housing gauge. The receiving industrial type tank is built-in, suitable for water treatment. BRC22/catalyst's main transition elements are Aluminum Oxide (Al₂O₃) and Silicon Dioxide (SiO₂), specialized materials to be suitable for high temperatures. As the characteristic of ceramic catalyst, with optical function; the thermal function has heat-resisting ability; and the electrical function has an ionic conductivity.



What's Amazing with the W.Inspire's Water?

When Tap Water passes through W.Inspire's Water Activation System, it does not have electricity and chemical timber, nor a filter or a reverse osmosis membrane. Retaining vital substances and trace minerals that are essential to life, such as: Ca (Calcium), K (Potassium), Al (Aluminum), Cr (Chromium), Fe (Iron), Li (Lithium), Mg (Magnesium), Mn (Manganese), Si (Silicon), Na (Sodium), and B (Boron), etc.

However, it is energized to produce the dissolving power of water, as we can expect a 48 degree effect of **solvency**, **detergency**, **solubility (penetration)** and **sterilization effects**, transforming ordinary tap water to alkalized living water.

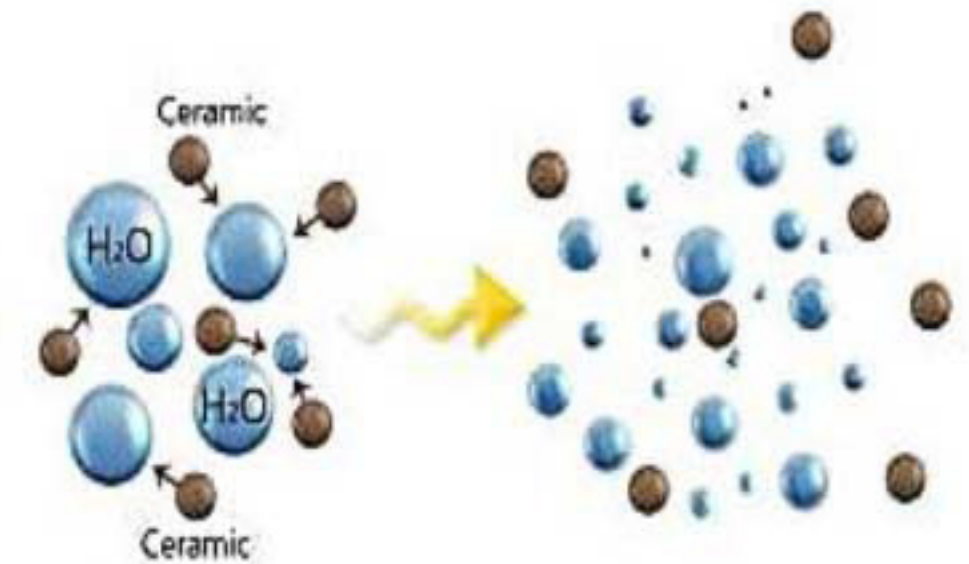


W.Inspire's Water Activator Technology: An Entirely Different Process from Water Purifiers

The transition element used as the main component of alumina is built in a specially processed Far-Infra-Red (FIR) ceramic pellets. Ionization takes effect on these active substances once it gets in contact with water that changes the water molecules, reviving the original power of water as to the qualities of penetration, solubility, dissolving and washing power. Promoting freshness, hydrating qualities, purification, deodorization, and surface activity as in the qualities of a truly Living Water in a natural environment.



Tap water contains floating elements like Chlorine and Heavy Metals which is bad for humans.



When water passes through the ceramic clusters, it is broken into smaller particles and gets rid of these bad elements.

W.Inspire's Water Activator : A Superior Technology With A Vision To Give Vitality to Life!



◆ For Health & Environment

- Increased amount of dissolved oxygen is vital to good health; it promotes metabolism, overall well-being and protection from chronic illnesses.
- Its easy and mellow to drink , safe, and hygienic; with equal bactericidal effect of chlorine, but stripped off of its harmful toxic compounds.
- With its strong hygienic purifying force, drainage water is also stripped off of pollutants that makes it environmentally safe. It's like having your own waste water treatment device.

◆ It is Safe & Economical

- Duly certified water supply equipment by the Japan Water Works Association.
- Built-in bio ceramic ionizers has a long period range of usability.(Since replacement of filter is not required, it is maintenance free). Savings on filters.
- Protection of the piping system from rust and slimy moss or algae, thus, prolonging the life-span of the entire water as well as drainage pipe systems..

◆ It is Convenient

- One unit can supply an entire household. Activated water can now be available on all faucets in the house, on all toilets and baths, kitchen, wash area, garage and garden area. It is even best for swimming pools.
- Drinking, cooking, bathing, etc., can now be luxuriously supplied with premium alkaline water including watering the garden and bathing pets.
- Surprisingly, as we enjoy the marvelous functions of W.Inspire's Activated water, we need not worry about meter pressure, for this unit will run on existing water pressure.



1. Kitchen

2. Toilet, Lavatory, Laundry



W.Inspire's Water Experience: HOUSEHOLD LEVEL

- Convenience
- Health & Environmental Benefits
- Safe & Economical

3. Bathroom

4. Garage & Garden

Drainage Pit

Clean
Wastewater
Off To
Drainage
System

Drainage Exit

W.Inspire's Water Activator System

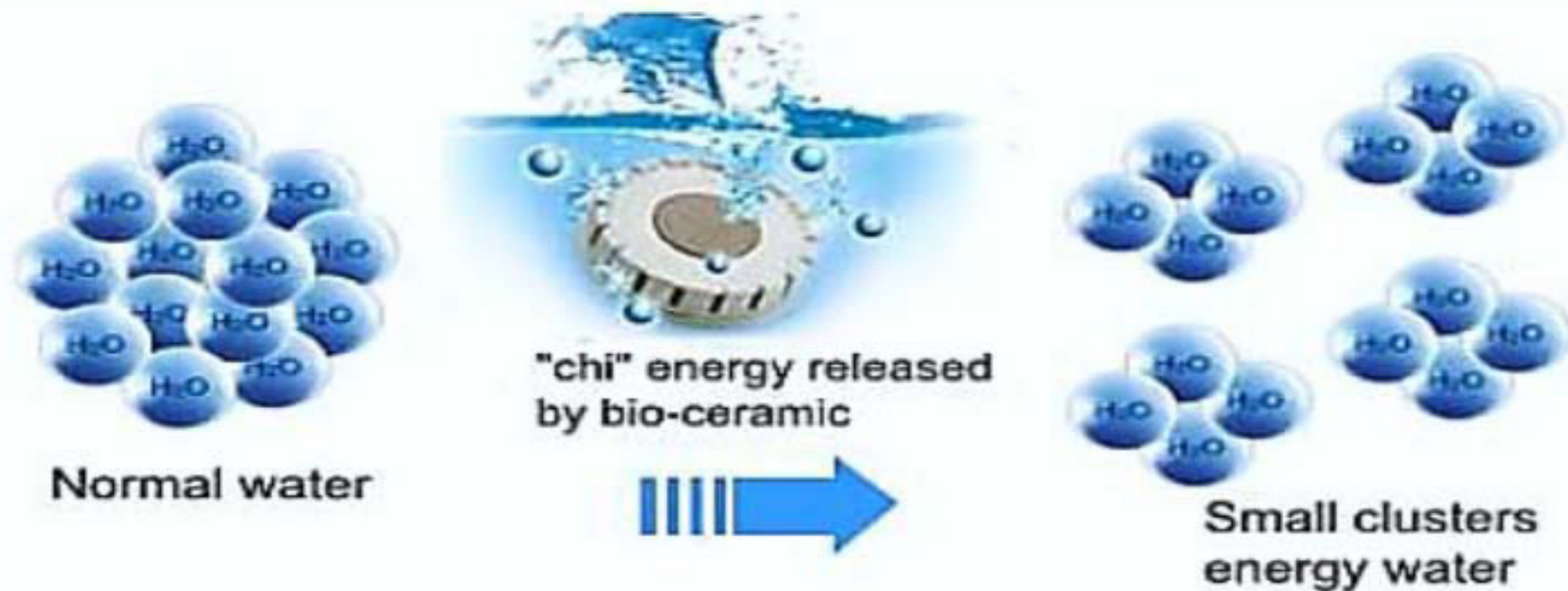


FEATURES OF **W.Inspire's Water Activator**

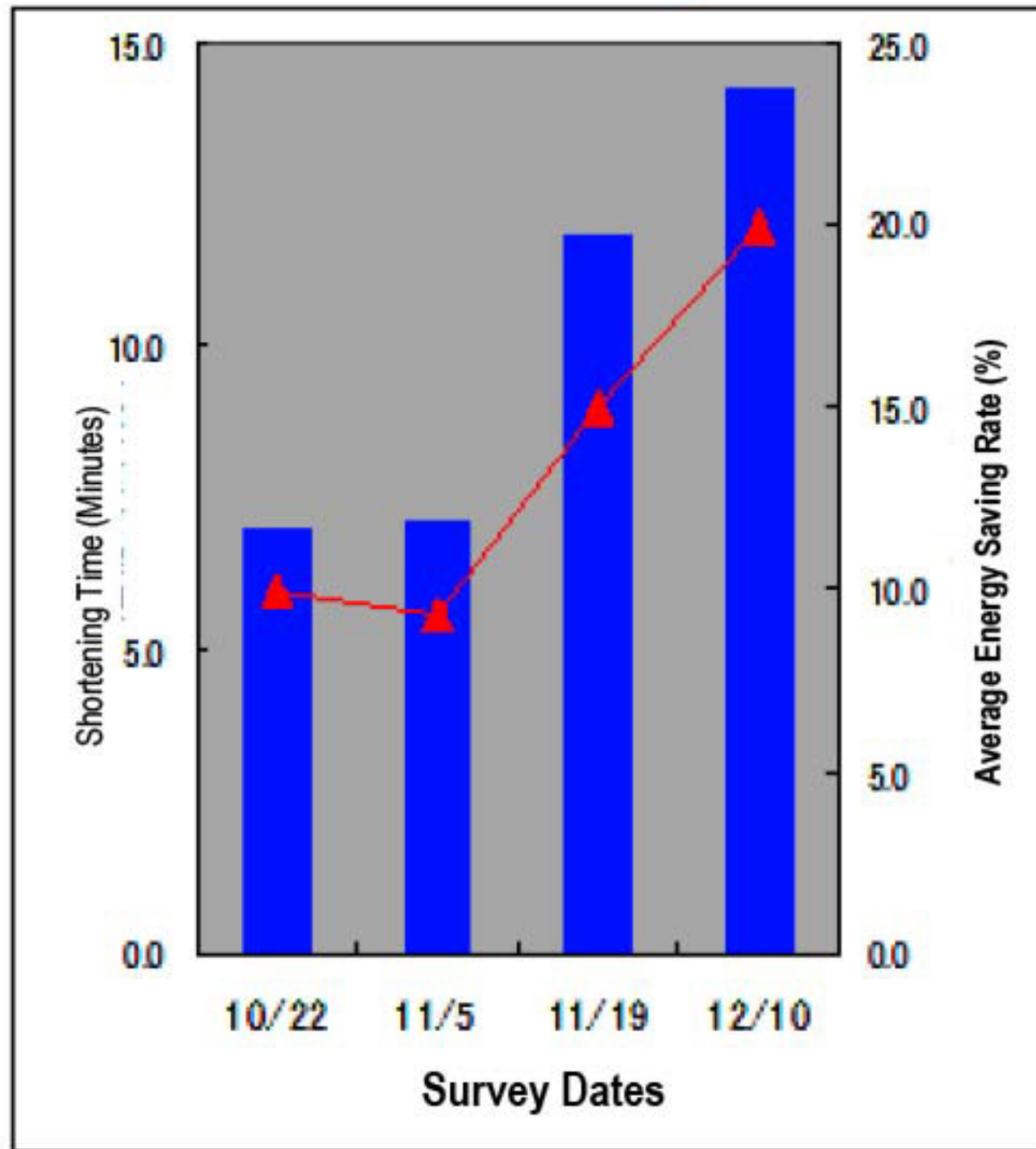
1. Lowering of Water's Surface Tension

Loosened hydrogen bonding of water mitigates the hydrophobic bond of water molecules and produces a chemical reaction that changes the water into a smooth water.

Main effect: W.Inspire's Activated Water enhances energy in the body, improves the condition of incurable and chronic diseases, grows plants faster and healthier, and keeps the freshness of food longer.



Time Saving and Energy Saving Rate



FEATURES OF **W.Inspire's Water Activator**

2. High Thermal Efficiency

Thermal energy conductivity is fast both for heating and cooling water. Due to the lower surface tension to the same value, water starts cooling at 20 °C and boils water at 50 °C respectively.

The main effect: Due to a faster heat conductivity, fuel/energy consumption savings for boilers and other heating devices is achieved. Cooling speed efficiency results to saving time and energy costs .

Thermal Efficiency Test of the Boiler

| | | | | | |
|--------------------------------|-------|------|-------|-------|------|
| Date of Test | 10/22 | 11/5 | 11/19 | 12/10 | 平均 |
| Shortening Time (Min) | 7.0 | 7.1 | 11.8 | 14.2 | 9.2 |
| Average Energy Saving Rate (%) | 9.9 | 9.3 | 14.9 | 20.0 | 12.4 |

***Measuring the energy-saving effect in the heating time of the bathtub I a nursing home. Calculated on the basis of the heating time of up to the set temperature.

Rise before installation 14.6 °C
60 minutes
October 22, 14.6 °C rise
53 minutes
December 10, 14.6 °C rise
45.8 minutes
Energy-saving rate (December) = 24%

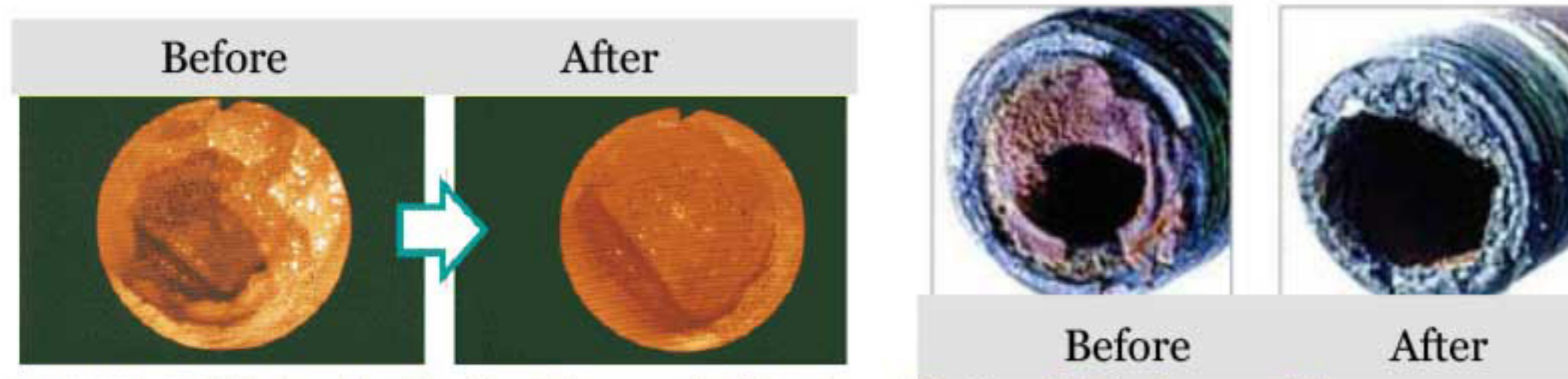
FEATURES OF **W.Inspire's Water Activator**

3. Anti-Rust Properties and a Surfactant

Rust is due to oxidation phenomenon of metal. In order to prevent the rust is important to change the oxidation mechanism. Compared to ordinary water, the living water W.Inspire has the ability to form a stainless like oxide film capable to coat the metal surface and alter the oxidation process, thus preventing the production of rust. It has also a strong cleaning power to remove heavily embedded and thickened rust on the metal surface.

As a surfactant, W.Inspire's Active Water has the capability of reducing the surface tension of a liquid in which it is dissolved.

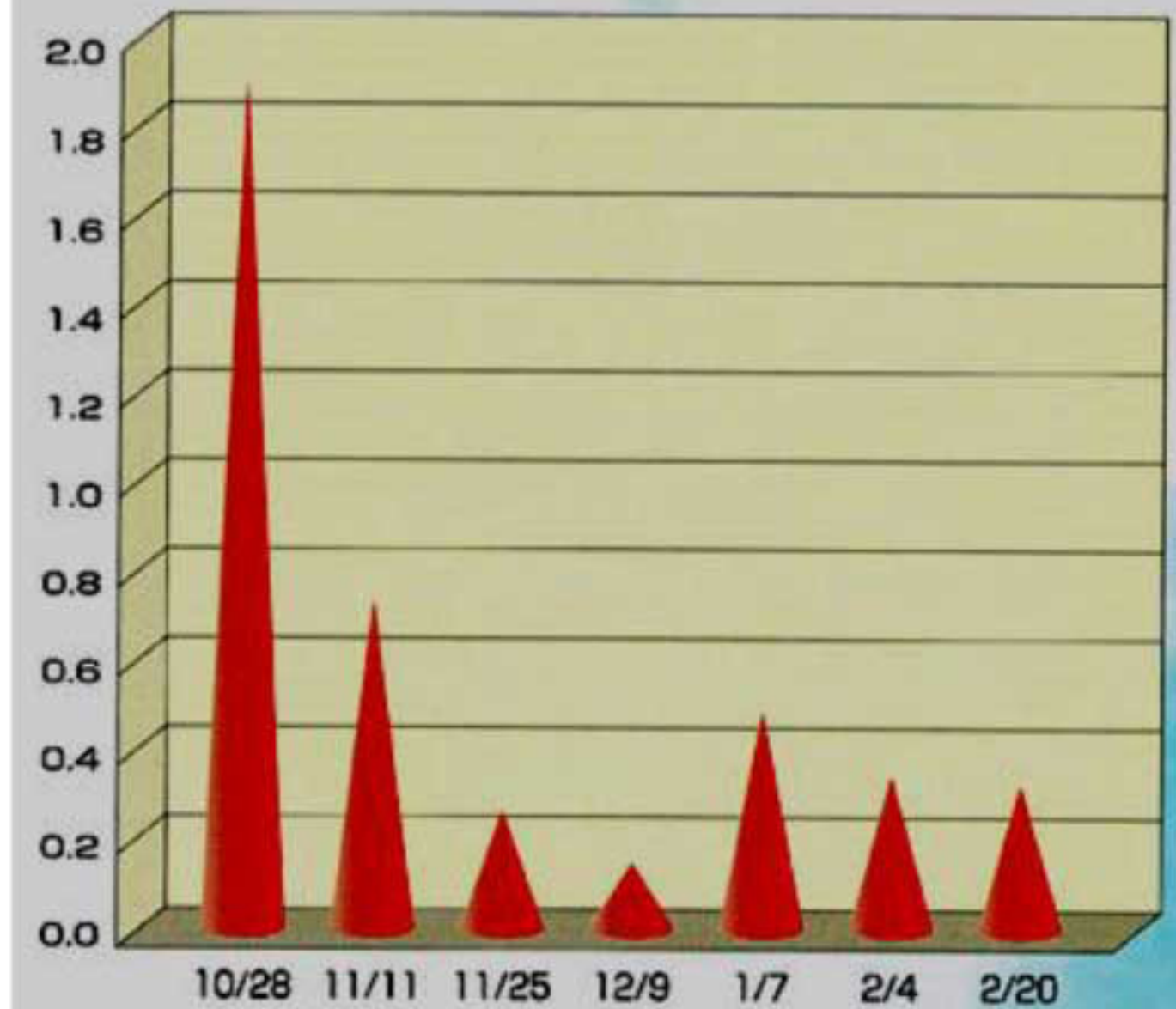
The main effect: Suppressing rust and scaling it off from existing ones.



W.Inspire's Water Activator Prevents Rust on Water & Drainage Pipes

Rust is due to oxidation of metal. In order to prevent the rust is important to alter the process of oxidation. The living water of W.Inspire has the ability to form an oxide film that alters and can potentially reduce the process of oxidation, thus producing a powerful cleaning agent that removes thick stubborn rust. Best results starts in three week to three months of continuous use.

Change Measurement Of Iron And Turbidity



| Date | 10/28 | 11/11 | 11/25 | 12/9 | 1/7 | 2/4 | 2/20 |
|------------|-------|-------|-------|-------|-------|-------|-------|
| Total Iron | 1.850 | 0.650 | 0.201 | 0.148 | 0.401 | 0.282 | 0.275 |
| Turbidity | 8.88 | 4.15 | — | — | — | 1.84 | 1.62 |

FEATURES OF **W.Inspire's Water Activator**

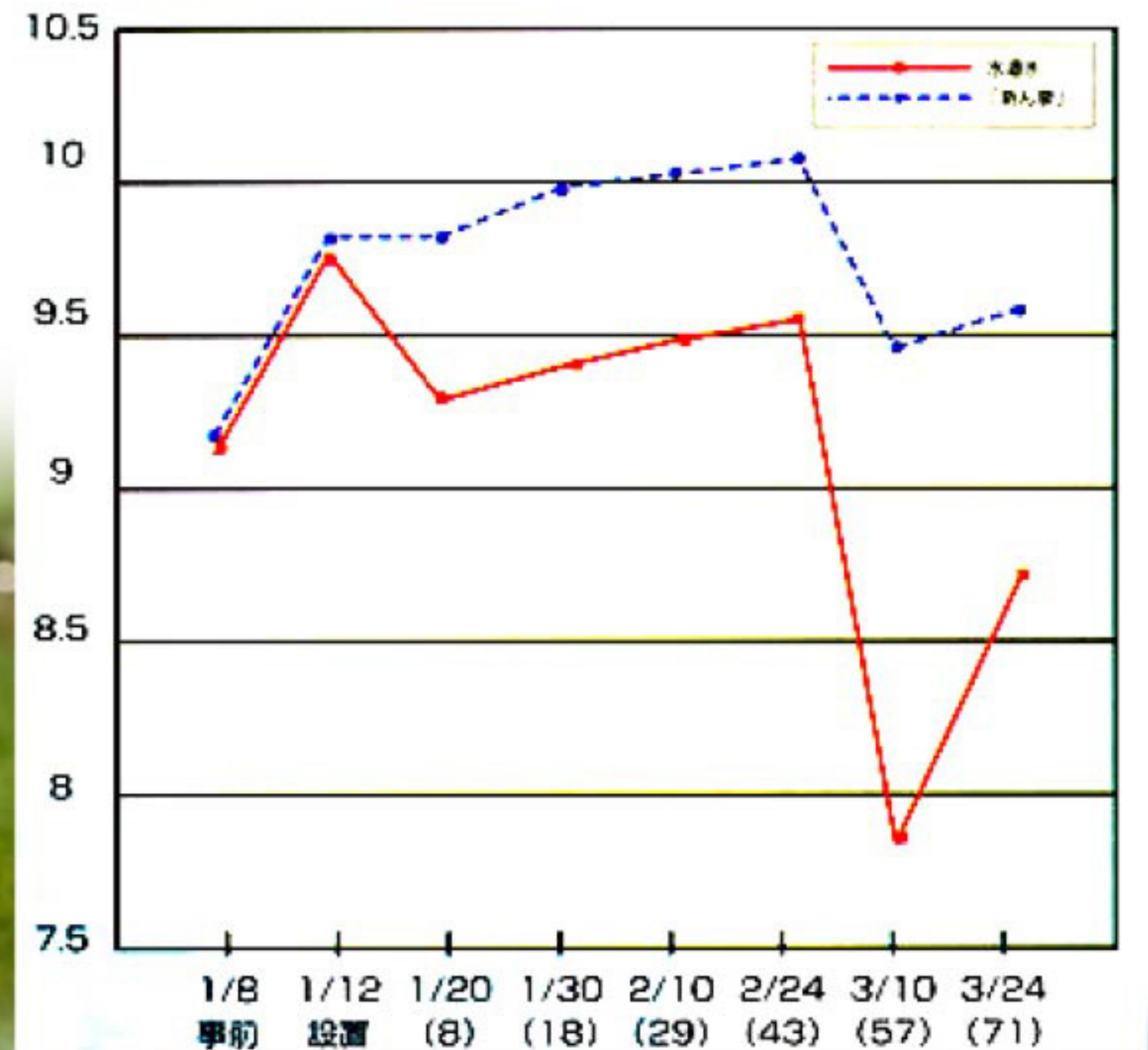
4. Increase Of Dissolved Oxygen

The amount of oxygen that is dissolved in the water increases.

The main effect: Essential to human life and well-being, it makes water fresh, invigorating, life giving, eradicating free-radicals and tastes as of the high altitude spring water, accelerating the growth of plants, enhancing the health of fish in ponds, and purifying the waterways.



Changes in the Amount of Dissolved Oxygen



FEATURES OF **W.Inspire's Water Activator**

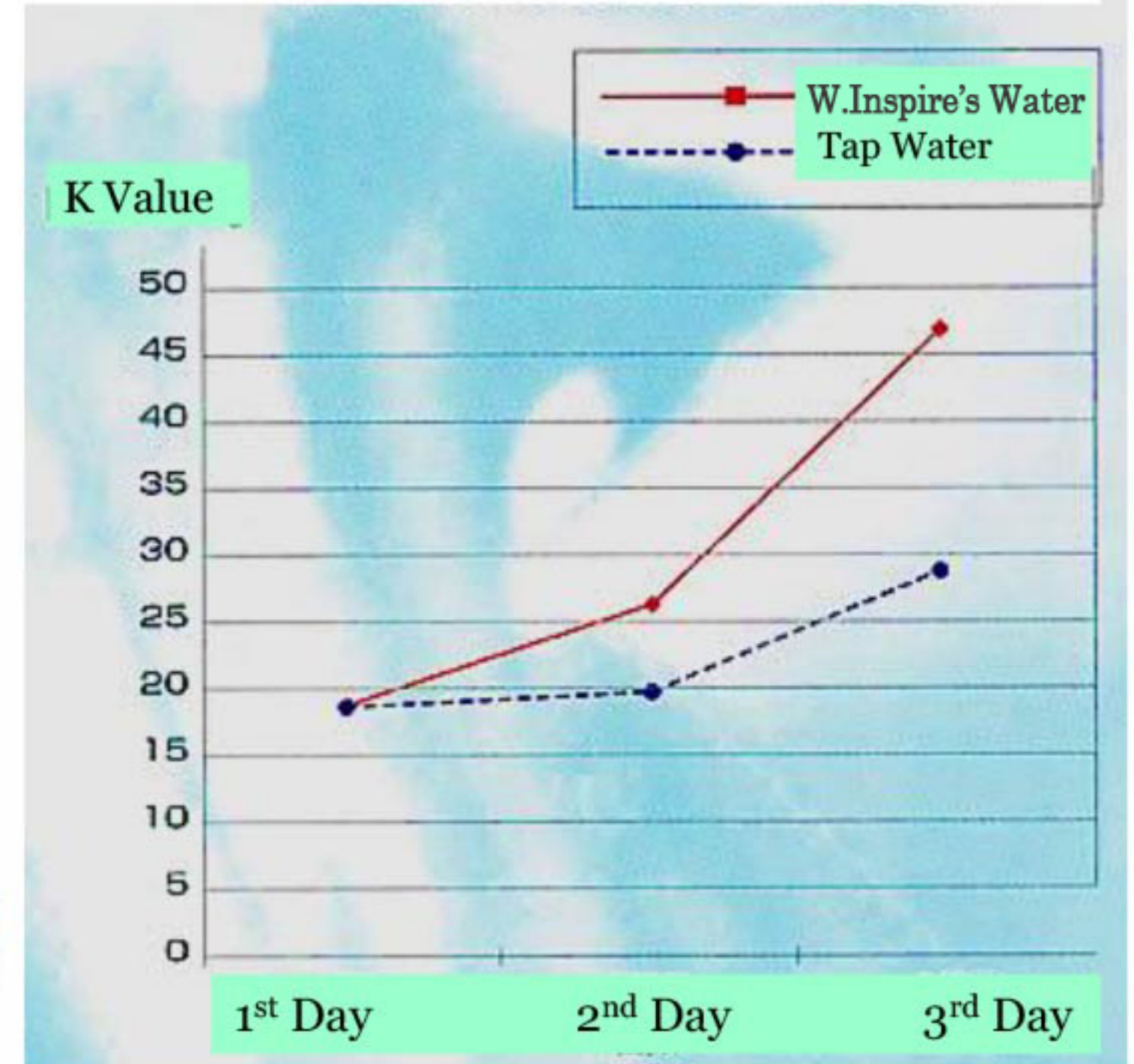
5. Antiseptic Effect

It's anti-microbial properties suppress the growth of spoilage bacteria. Maintains a deodorizing effect that maintains freshness.

The main effect: Prevention from food poisoning, keeps food from getting spoiled easily, maintain the freshness of food like vegetables, fruits, fish, meat, etc.



Freshness comparative experiments **ANTISEPTIC EFFECT OF HORSE MACKEREL**



FEATURES OF **W.Inspire's Water Activator**

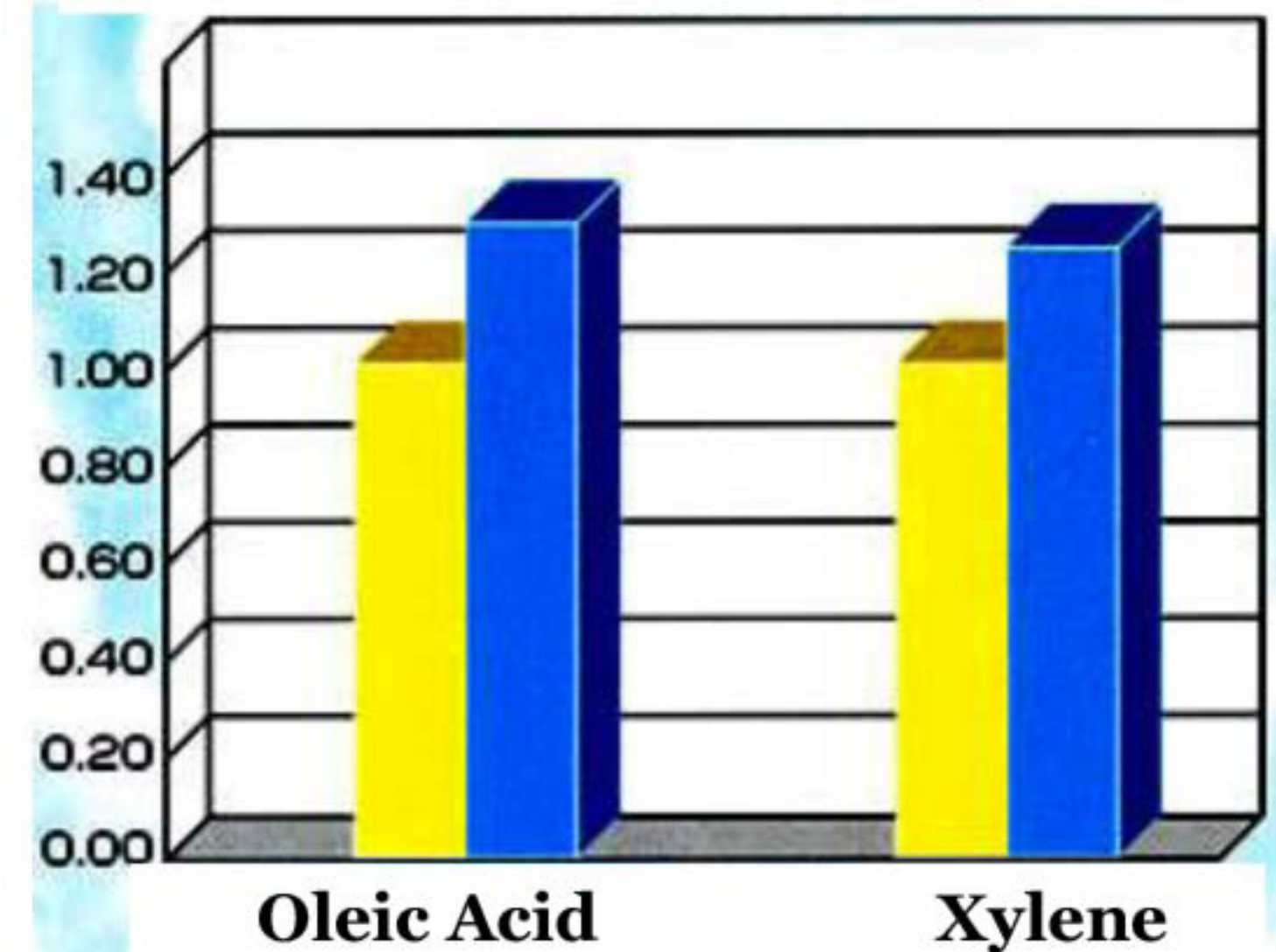
6. Increased Fatty Acid Solubility

The power of hydrolysis becomes stronger, water solubility, such as oil, and other fatty acids and its decomposition rate will be higher.

The main effect: Detergency up, drainage, reduction of environmental load. The water particle's power becomes stronger to separate oil, fat, grease, and dissolve its substance fast, avoiding clogs and dissolving slugs, flushing back clean water in the drainage and waterways.



Oil Solubility



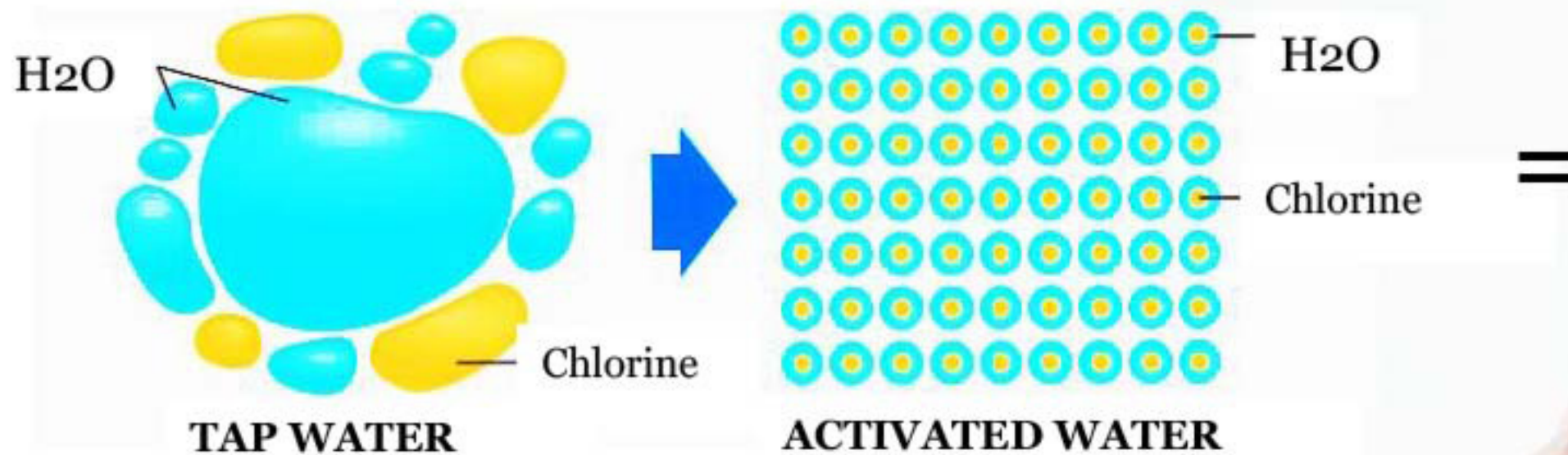
| | Oleic Acid (Vegetable Oil) | Xylene (Mineral Oil) |
|-------------------|-------------------------------|-------------------------|
| Tap Water | 1.00 | 1.00 |
| W.Inspire's Water | 1.30 | 1.22 |

FEATURES OF **W.Inspire's Water Activator**

7. Antimicrobial Effect By Chlorine Retention

W.Inspire's tightly wraps the chlorine in the water with a small cluster of high energy to weaken its toxicity yet retaining its antimicrobial action due to the chlorine disinfecting effect, and removing its strong odor.

The main effect: Water becomes clean and alive, eliminating the risk of microbial growth, safe for drinking and maintains a clean refreshing taste.



Areas for Ideal Application of W.Inspire's Water Activator

❖ Bathrooms

- Shortens the heating/cooling time of water, thereby saving gas and energy bills for household hot/cold water systems
- No slimy bathtubs, stays clean and fresh from impurities.
- Experience an exhilarating feeling and a remarkably smooth skin after shower.
- With only a small amount of shampoo and soap, can produce wonder lather in shower
- Mold is less likely to grow on the wall surface of the bathroom.
- Clogging and unpleasant smell of the drainage port will eventually disappear.



❖ Washrooms/Toilets

- Smoother face after washing and shaving, and avoid stingy feeling.
- It prevents the clogging of pipes, and does not accumulate solid particles and water stains.
- Easy washing for clothes, dirt separates fast, saves water for rinsing.
- Eliminates toilet dirt and stench, cleaning becomes easy.



❖ Kitchens

- With W.Inspire's Water Activator, water directly taken from the faucet becomes mellow to drink and removes the chlorine odor of tap water.
- Drinking active water on a regular and continuous basis can promote total health well-being especially of internal organs for it helps speed up body metabolism, and circulation, and enhances energy in the body, improves the condition of incurable and chronic diseases.
- Washing fruits and vegetables, with active water, is ideal as it does not wash away its vitamins, thereby retaining its nutrients and prolongs its long-lasting freshness.
- The original taste of meat, fish, and other foodstuffs are retained even after thawed from the freezer.
- Rice cooked in active water becomes plump & delicious, and does not easily spoil.
- Food cooked in active water retains its original delicious flavor even with less or no seasoning.
- Dirt does not accumulate on angular corners of difficult to clean corners, drains and drainage pipes.





❖ For Plants

- Watering garden of plants with active water, retains the vivid healthy colors of flowers and leaves, as it has a growth promoting and soil improvement properties.
- Use of little insecticide and pesticides is permitted. Plants becomes healthy, and grows less susceptible to diseases.

❖ For Pets

- Ideal drink for pets as it removes the stench taste of chlorine from the water that pets resist.
- Enhances the physiological defenses & immunity of the animals
- Stinky smell of dog and cat urine and droppings are minimized.
- Improved hair gloss and radiance on pet's hair after bathing in active water.



For Water Ponds

(Please contact us first if you are planning to use active water for water ponds, or aquariums for ornamental fish culture)

- Fish and goldfish in active water maintains its vivid color, becomes healthy, and less likely to get ill.



For Cars









- Conveniently cleans car without the use of detergent.
- Retains and bring about a clean luster on the car after washing with activated water.



For Swimming Pools

- Experience a refreshing and exhilarating feeling, dipping in a pool of activated water, with all the therapeutic benefits of alkaline water: clean, clear and vibrant skin, safe from microbials and other water-borne diseases, while enjoying the soft, clean and safe sanitized natural water.
- No slimy pool floors, reduced chlorine content and protection from UV rays.
- Ideal for private residential pools, resorts, hotels, spas, and other water recreational facilities.



| PRODUCT SPECS | | MODEL | 1 HR OF FLOW RATE/TON | ESTIMATED NUMBER OF | OTHER MAIN USAGES |
|--|---|--------|-----------------------|---------------------|---|
|  | W.Inspire's TH series (TH-400) Standard mm (inches) × mm × mm 20 (3/4) × 89.1 × 400 Processing capability (*) 33 l/min Weight/about 9kg | TH-400 | 2 | 1-2 | General home, cafeteria, shop, fish shop, barber shop, small office, etc. |
|  | W.Inspire's TH series (TH-500) Standard mm (inches) × mm × mm 25 (1) × 101.6 × 500 Processing capability (*) 55 l/min Weight/about 12kg | TH-500 | 3.3 | 3 to 6 | Dining room, four to five households apartment, private hospitals, etc. |
|  | W.Inspire's TH series (TH-600) Standard mm (inches) × mm × mm 30 (11/4) × 114.3 × 600 Processing capability (*) 80 l/min Weight/about 27kg | TH-600 | 4.2 | 6 to 15 | Small buildings, condominiums, apartments, small factories, etc. |
|  | W.Inspire's TH series (TH-700) Standard mm (inches) × mm × mm 40 (11/2) × 139.8 × 700 Processing capability (*) 140 l/min Weight/about 42kg | TH-700 | 8.4 | 15 to 40 | Buildings, apartments, nursing home, elementary and junior high schools, etc. |
|  | W.Inspire's TH series (TH-800) Standard mm (inches) × mm × mm 50 (2) × 165.2 × 800 Processing capability (*) 220 l/min Weight/about 60kg | TH-800 | 13.2 | 40 to 80 | Building, apartment, various school, facility, school lunch center, factory, etc. |
|  | W.Inspire's TH series (TH-900) Standard mm (inches) × mm × mm 65 (2 1/2) × 216.3 × 900 Processing capability (*) 350 l/min Weight/about 110kg | TH-900 | 21 | 80 to 150 | Large buildings, condominiums, public facilities, factories, etc. |
|  | W.Inspire's TH series (TH-1000) Standard mm (inches) × mm × mm 80 (3) × 267.4 × 1000 Processing capacity (*) 550 l/min Weight/about 200kg | H-1000 | | 150 to 250 | Ditto |
|  | W.Inspire's TH series (TH-1200) Standard mm (inches) × mm × mm 100 (4) × 355.6 × 1200 Processing capacity (*) 900 l/min Weight/about 296kg | H-1200 | 54 | 250-350 | Ditto |

Water Activator



A Quality Product Manufactured by:



K2 Technology Co., Ltd. (Japan)



Imported And Distributed by:

World Inspire Japan Co.,Ltd.(Japan)